



Middle School Classroom Furniture

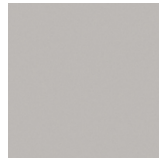
Note: All pictures are for illustration purposes only. Actual furniture may vary. Prices subject to change. (Revised 3/18/2025)

Aperture Shape Desk



Video demo of different ways the desk can be set up:

<https://vimeo.com/92789102>



Fashion Grey #D381 Laminate

Student Desk, Aperture Shape, 24" x 40", (adjustable height 25" - 38" for sitting or standing),
Laminate Color: Fashion Grey, High Gloss Dry Erase Surface with Black Band Edge
Includes Casters on 2 of the Legs

Recommended Settings:

Grade	Sitting Height	Standing Height
6th-8th grade:	29" H	36" H

Order Info: Vendor: Concepts / Mfr. C&H Equip. Part #: CH-AP2440P, \$407.19 each

Triangle Shape Desk



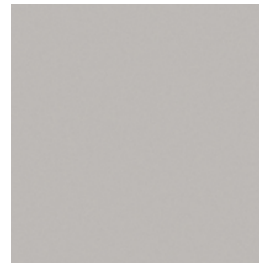
Student Desk, Triangle Shape, 28" x 28" x 36", (adjustable height 28" - 42" for sitting or standing),
Hard plastic surface color: Gray
Includes Caster on Center Leg

Recommended Settings:

Grade	Sitting Height	Standing Height
6th-8th grade:	29" H	36" H

Order Info: Vendor: Concepts /Mfr. C&H Equip. Part #: CH-TR282836P, \$309.08 each

Square Table



Fashion Grey #D381-01

Activity Table, Square Shape, 48" w x 48" L , (adjustable height 24"-32"H),
Laminate Color: Fashion Grey, High Gloss Dry Erase Surface with Black Band Edge

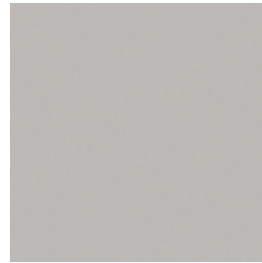
Recommended Settings:

Grade	Sitting Height
-------	----------------

6th-8th grade:	29" H
----------------	-------

Order Info: Vendor: Virco / Mfr. Virco Part #: X504848ADJCHRM, \$448.96 each

Café Height Table



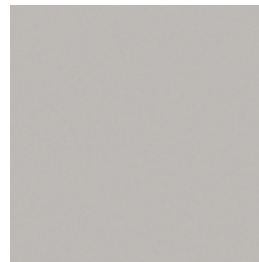
Fashion Grey #D381-01

Café Height Table, Round Shape, 42" diameter, 41" high (fixed height)

Order Info: Vendor: Virco Inc.

Part #: Top: X-U42RDE (Top) / 6613341CHRM (Lunada Base), \$689.60 each

Flip & Nest Table



Fashion Grey #D381-01

For Math rooms

Flip & Nest Table, Rectangle Shape, 30"W x 48"L, (Adjustable height 25"-35"H)

Laminate Color: Fashion Grey, High Gloss Dry Erase Surface with Black Band Edge

Recommended Settings:

Grade	Sitting Height
6th-8th grade:	29" H

Order Info: Vendor: Sierra School Supply / Mfr. Fleetwood Part #: FNPR438 \$994.56 each

Science Table

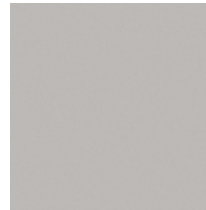


For Science rooms

Science Table, Rectangle Shape, 24"W x 54"L x 30"H (fixed height),
High Pressure heat/chemical resistant laminate Top, Solid Wood Legs, Rubber Leg Boots

Order Info: Vendor: Concepts / Mfr. National Public Seating Part #: SLT2454, \$374.00

Half Moon Table



Fashion Grey #D381-01 Laminate

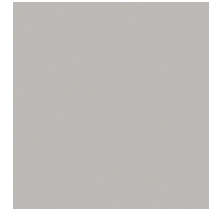
Activity Table, Half Moon shape, 36"W x 72"L, (adjustable height 22"-30"H),
Laminate Color: Fashion Grey, High Gloss Dry Erase Surface with Black Band Edge

Recommended Settings:

Grade	Sitting Height
6th-8th grade:	29" H

Order Info: Vendor: Virco / Mfr. Virco Part #: X48COOP72DECHRM, \$529.60 each

Nest Table (Half-moon/Wave)



Fashion Grey #D381-01 Laminate

Activity Table, Half-moon/wave (Nest) shape, 30"W x 54"L, (adjustable height 22"-30"H) , Dry Erase Surface with black band edge, (2 placed together make a round table, or can be used in place of the "horseshoe" by slight separation with teacher in the center)

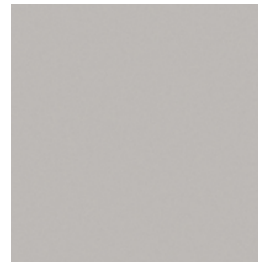
Laminate Color: Fashion Grey, High Gloss Dry Erase Surface with Black Band Edge

Recommended to be set at the following heights:

	<u>For sitting</u>
6th-8th grade:	29" H

Order Info: Vendor: Virco / Mfr. Virco Part #: X48NEST54DECHRM, \$263.68 each

Presentation Table



Fashion Grey #D381-01

Presentation Table, Rectangle Shape, 24"W x 48"L , (adjustable height 30"– 39")

Laminate Color: Fashion Grey, High Gloss Dry Erase Surface with Black Band Edge

Recommended Settings:

Grade	Sitting Height	Standing Height
6th-8th grade:	29" H	36" H

Order Info. Vendor: Virco / Mfr. Virco Part #: X502448ADJSU, \$347.06 each

Student Chairs



Student Chair, Ergonomic, Specify Color from options shown above. (actual color may vary)

Recommended Sizes:

Grade	Height	Part #
6th-8th grade:	18" H	D10A

Order Info: Vendor: Office & Ergonomic Solutions / Mfr. Artcobell Part #: See above, 18", \$52.60 each

Stool with Back

For use with 41" High Café Tables



Student Stool, Ergonomic, Specify Color from options shown above. (actual color may vary)

Recommended Height:

Grade	Height	Part #
6th-8th grade:	30" H	AS4ST30

Order Info: Vendor: Office & Ergonomic Solutions / Mfr Part #: Artcobell AS4ST30, \$152.89 each

Backless Stools



Stool, backless, adjustable height (19"-27"), chrome legs. Specify Seat Color from options shown above (Colors may vary)

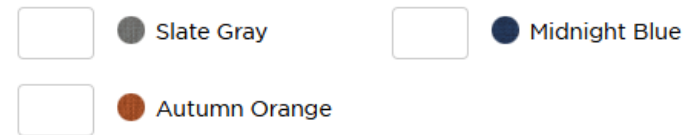
These are for use as an option to sit at standing height aperture or triangle desks.

Grade	Height
6th-8th grade:	27"

Order Info: Vendor: Office & Ergonomic Solutions / Mfr. Artcobell Part #: 801, \$109.34

Soft Seating

Individual pieces may be set up in any variety of configurations to create single chairs, sofa, etc.



Order Info: Vendor: Lakeshore Learning

Modern Edge Modular Chair, 34"H x 24"W x 27" (seat height 18"), Mfr Part #: LC780, \$563.06

Wobble Stools



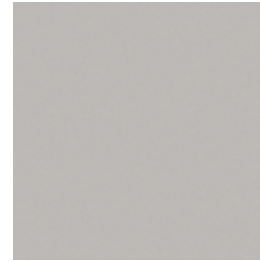
Stool, Active Learning, Specify Size from options shown below and Color from options shown above
(Blue, Red, Green, Black or Navy)

Recommended Height:

Grade:	Height
6 th -8 th Grade	20"

Order Info: Vendor: School Outfitters / Mfr. Learniture Part #: LNT 3046-20, \$77.88 each

Mobile Teacher Desk



Color: Fashion Grey #D381-01

Teacher Desk, peninsula-shape with removable podium, 30" w x 72" L x 29" H,
2 locking file drawers, center pencil drawer, black metal frame with locking casters
Laminate Color: Fashion Grey, High Gloss Dry Erase Surface with Black Band Edge

**Order Info: Vendor: Concepts School & Office Furnishings, Mfr C&H
Equipment Part #CHSP3072P-CD, \$1,066.16 each**

Teacher Ergonomic Chair



Ergonomic Task Chair, Mesh back with upholstered seat

- **Chair with Arms**
- **Fabric Color: #2570 Graphene**

Order Info: Vendor: Office & Ergonomic Solutions / Mfr. Office Master Part #: YS72/KR-200, \$317.20 each

Teacher Chair for Small Groups



Onyx

Adult Chair (18" Chair with Casters), Color: Onyx
For use with small groups at activity tables

Order Info: Vendor: Office & Ergonomic Solutions / Mfr. Artcobell Part #: D16A, 18", \$86.73 each

Outdoor Tables



Octagon Shape Outdoor Table, 46" Top,
Seats 8



Rectangle Shape Outdoor Table, 8 ft. long,
Seats 10-12

Can be used outside the classroom(s) for outdoor learning if space is available, May also be used in lunch area(s).
Black Frame, Specify Color for Top and Benches:

Order Info: Vendor: Dave Bang Associates

Mfr: Wabash Valley

Octagon Part #SG145D, \$1,601.00 each

Rectangle Part #SG111D, \$1,460.00 each



Storage for New Relocatable Classrooms

District standard is two of each piece (Straight Shelf, Tall Locking Cabinet and Cubby), additional pieces may be purchased with site funds

Rainbow Accents Super-Sized Adjustable Mobile Straight-Shelf



Product Dimensions: 35.50" H x 48" W x 15" D
Color: Gray/Blue Edge Banding

Order Info: Vendor: Office & Ergonomic Solutions Inc. / Mfr. Jonti-Craft, Part #: 26932JCWW112 \$584.99 each

Rainbow Accents Super-Sized Adjustable Mobile Straight-Shelf



Product Dimensions: 72" H x 36" W x 24" D
Color: Gray/Blue Edge Banding

Order Info: Vendor: Office & Ergonomic Solutions Inc. / Mfr. Jonti-Craft, Part #: 5950JC112 \$1,358.99 each

Rainbow Accents 20 Tub Mobile Storage



Product Dimensions: 29.50" H x 60" W x 15" D
Color: Gray/Blue Edge Banding

Order Info: Vendor: Office & Ergonomic Solutions Inc. / Mfr. Jonti-Craft, Part #: 0421JCWW000 \$895.50 each